

# LAKE GENEVA

201 South Edwards Blvd., Lake Geneva, WI 53147



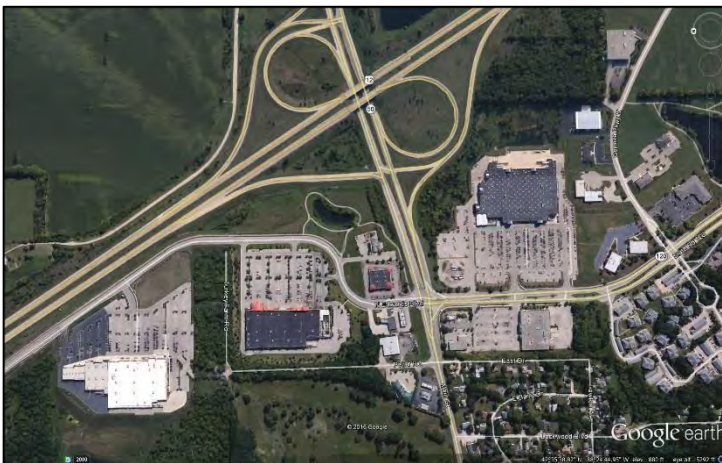
## Property Information:

- Wal-Mart Supercenter
- Prime Location
- Near Intersection of Hwy 12 & Main St.
- Traffic Count – 40,700 vehicles per day

## Demographics:

Estimated Population in 2016  
Projected Population in 2020  
Average Household Income  
Median Household Income

	3 miles	10 miles
Estimated Population in 2016	10,078	75,716
Projected Population in 2020	10,092	75,692
Average Household Income	\$69,254	\$74,709
Median Household Income	\$51,600	\$57,204



## For More Information Contact:

Raul Walters Properties

Phone Number:  
314.584.1606 ext.2

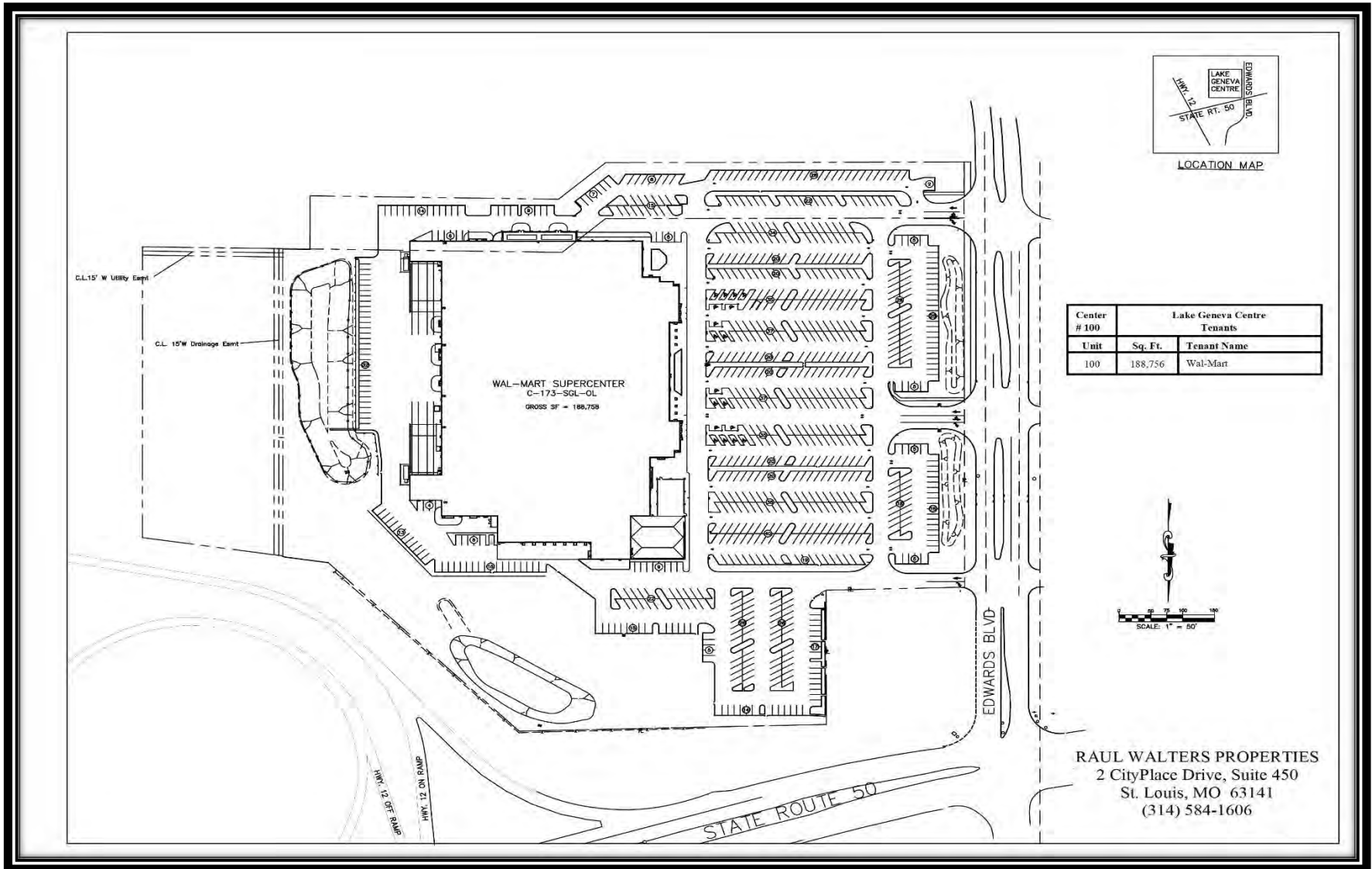
Office Address:  
Two CityPlace Drive  
Suite 450  
St. Louis, MO 63141

# LAKE GENEVA

201 South Edwards Blvd., Lake Geneva, WI 53147



Raul Walters  
PROPERTIES



Disclaimer: The above information is based on current marketing conditions. No warranty or representation, expressed or implied, is made as to the accuracy of the information contained herein. Prospective customers should conduct their own due diligence. Raul Walters Properties shall not be responsible for any inaccurate information.

# LAKE GENEVA

201 South Edwards Blvd., Lake Geneva, WI 53147



Raul Walters  
PROPERTIES



Disclaimer: The above information is based on current marketing conditions. No warranty or representation, expressed or implied, is made as to the accuracy of the information contained herein. Prospective customers should conduct their own due diligence. Raul Walters Properties shall not be responsible for any inaccurate information.