

KIRKSVILLE RENAISSANCE

2104 – 2302 South Baltimore Street, Kirksville, MO 63501



Raul Walters
PROPERTIES



Property Information:

- Regional Shopping Center
- Located in Main Retail Corridor
- Strong Secondary Market
- Retail Space Available
- Total Center Size – 133,658 sq. ft.
- Traffic Count – 20,881 vehicles per day

Demographics:

	5 miles	10 miles	30 miles
Estimated Population in 2016	19,912	23,664	51,734
Projected Population in 2020	20,015	23,736	51,950
Average Household Income	\$44,041	\$45,596	\$46,107
Median Household Income	\$30,244	\$32,202	\$34,618



For More Information Contact:

Raul Walters Properties

Phone Number:
314.584.1606 ext.2

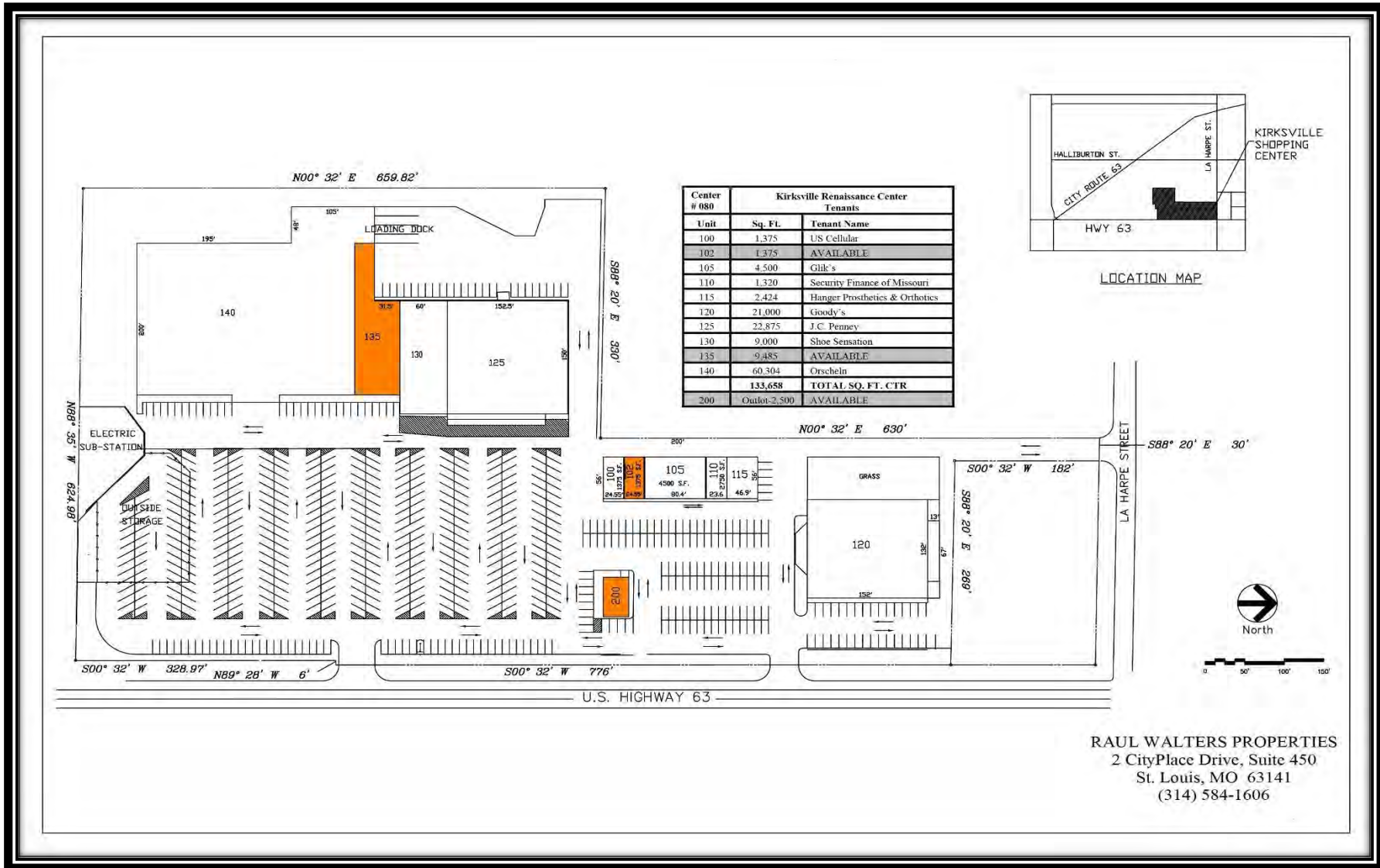
Office Address:
Two CityPlace Drive
Suite 450
St. Louis, MO 63141

KIRKSVILLE RENAISSANCE

2104 – 2302 South Baltimore Street, Kirksville, MO 63501



Raul Walters
PROPERTIES



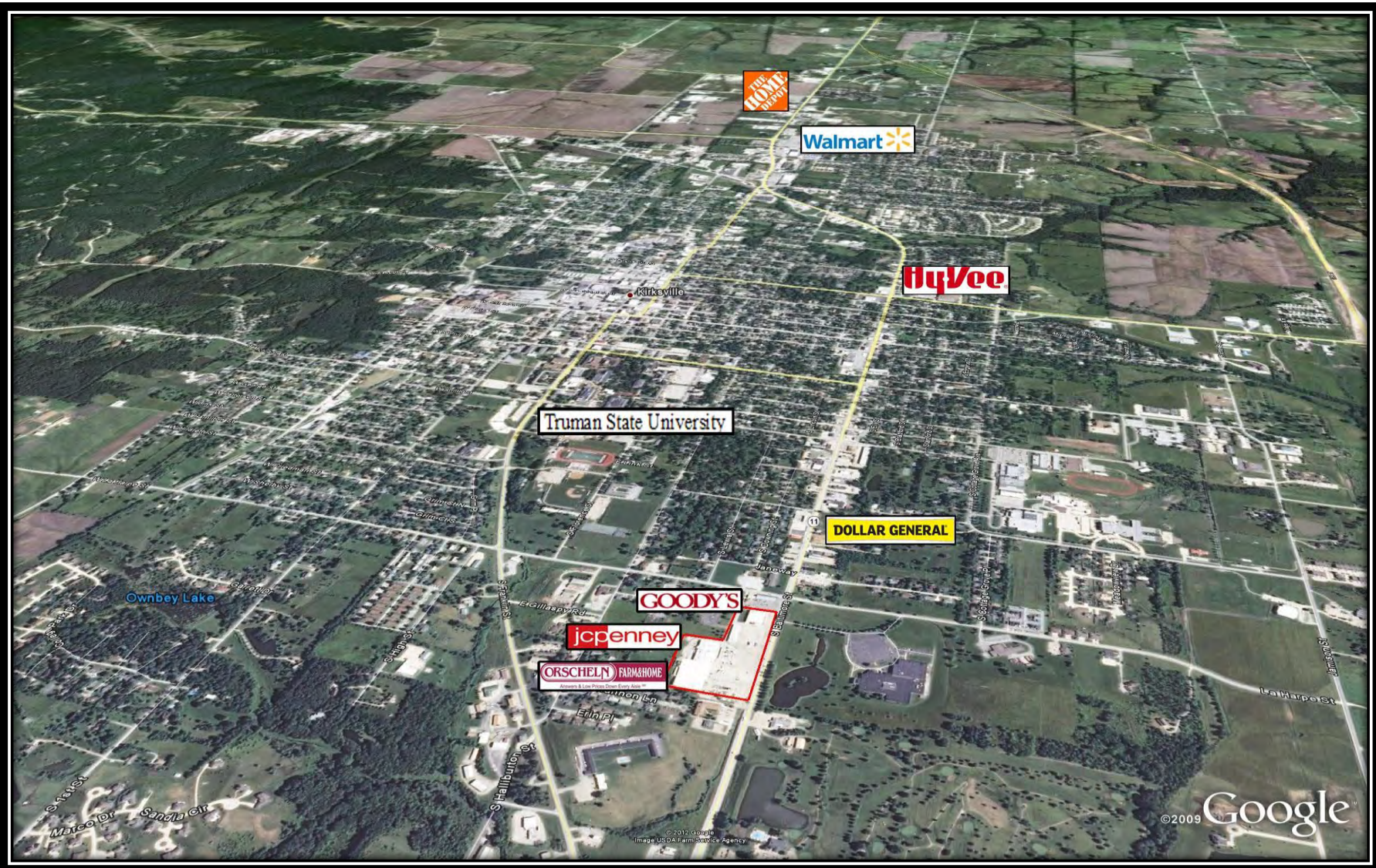
RAUL WALTERS PROPERTIES
2 CityPlace Drive, Suite 450
St. Louis, MO 63141
(314) 584-1606

KIRKSVILLE RENAISSANCE

2104 – 2302 South Baltimore Street, Kirksville, MO 63501



Raul Walters
PROPERTIES



Disclaimer: The above information is based on current marketing conditions. No warranty or representation, expressed or implied, is made as to the accuracy of the information contained herein. Prospective customers should conduct their own due diligence. Raul Walters Properties shall not be responsible for any inaccurate information.