

WENTZVILLE CENTER

15150 – 15190 Veterans Memorial Pkwy, Wentzville, MO 63385



Property Information:

- Anchored by Rural King Farm & Home Store
- Located at Interchange of I-70 & Wentzville Pkwy
- Currently 100% Leased
- Total Center Size – 101,430 sq. ft.
- Traffic Count – 92,111 vehicles per day

Demographics:

	5 miles	10 miles	15 miles
Estimated Population in 2016	79,018	206,288	352,979
Projected Population in 2020	85,414	220,181	372,540
Average Household Income	\$90,596	\$91,920	\$89,811
Median Household Income	\$74,159	\$78,266	\$75,455



For More Information

Contact:
Raul Walters Properties

Phone Number:
314.584.1606 ext.2

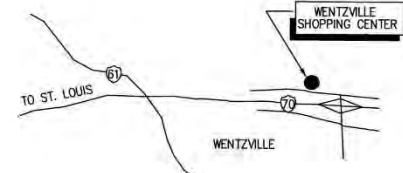
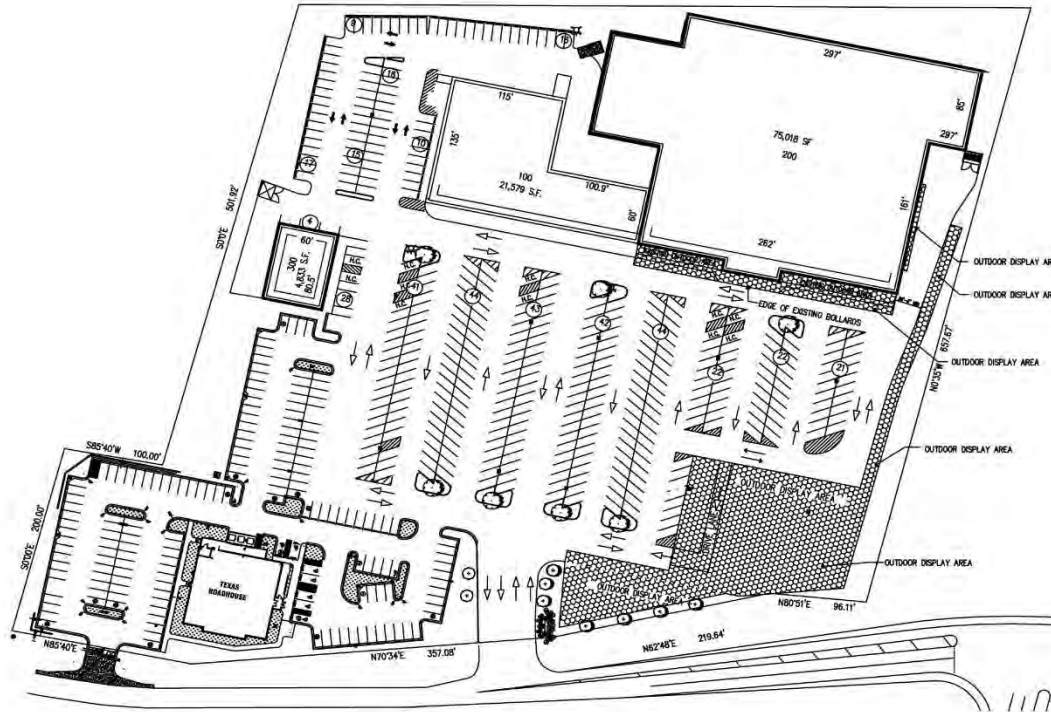
Office Address:
Two CityPlace Drive
Suite 450
St. Louis, MO 63141

WENTZVILLE CENTER

15150 – 15190 Veterans Memorial Pkwy, Wentzville, MO 63385



Raul Walters
PROPERTIES



LOCATION MAP

Center #	Wentzville Center Tenants	
Unit	Sq. Ft.	Tenant Name
200	75,018	Rural King
100	21,579	Club Fitness
300	4,833	Chimi's Fresh Mex
	101,430	TOTAL SQUARE FEET
	7,163	Texas Roadhouse



Graphic Scale: 1" = 50'-0"
0 50 100'

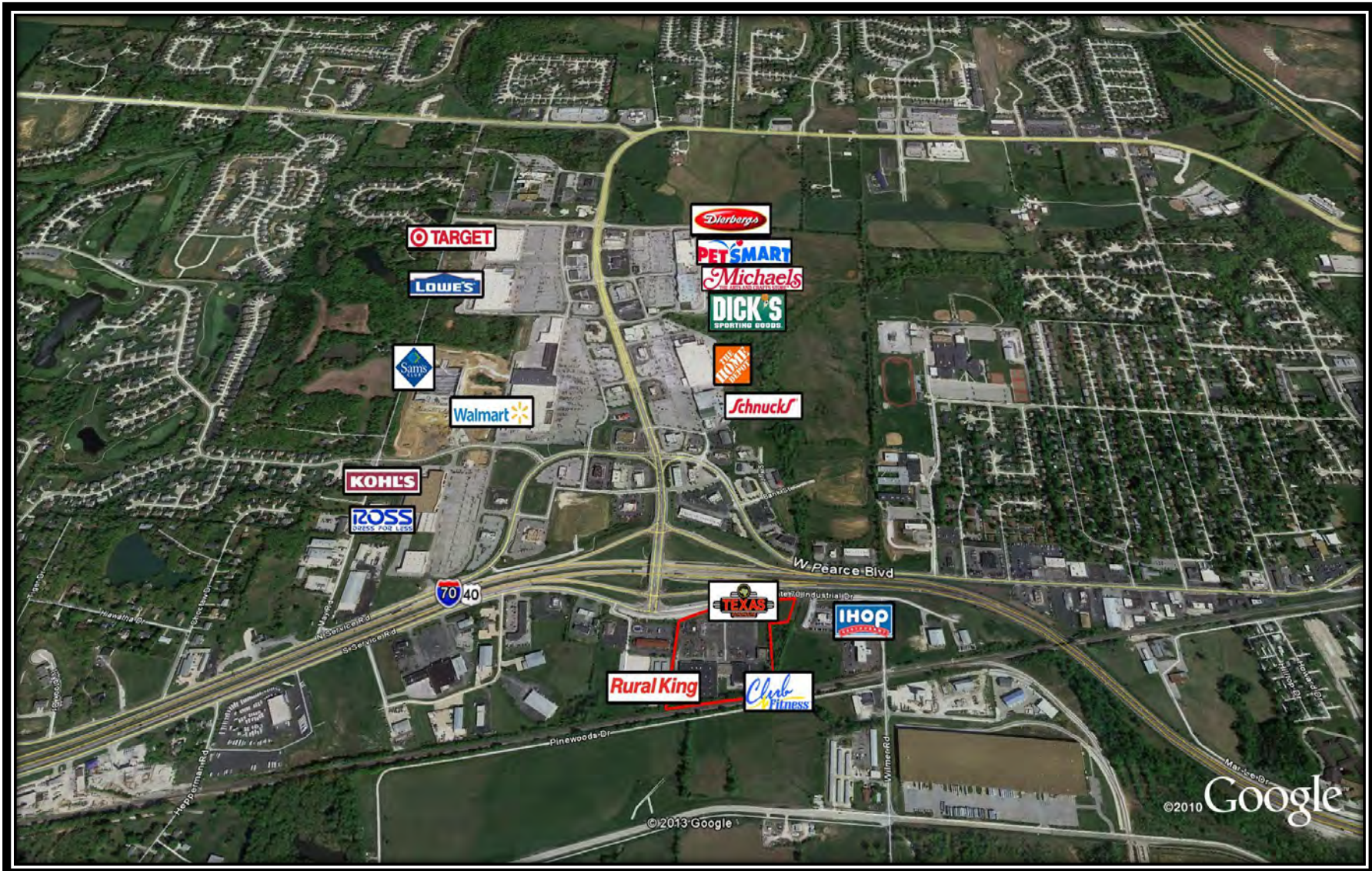
RAUL WALTERS PROPERTIES
2 CityPlace Drive, Suite 450
St. Louis, MO 63141
(314) 584-1606

WENTZVILLE CENTER

15150 – 15190 Veterans Memorial Pkwy, Wentzville, MO 63385



Raul Walters
PROPERTIES



Disclaimer: The above information is based on current marketing conditions. No warranty or representation, expressed or implied, is made as to the accuracy of the information contained herein. Prospective customers should conduct their own due diligence. Raul Walters Properties shall not be responsible for any inaccurate information.