

# OSAGE CENTER

1509 – 1575 Commercial St., Warsaw, MO 65355



Raul Walters  
PROPERTIES



## Property Information:

- Located at Interchange of I-65 & Hwy 7
- Retail Space & Outparcel Available
- Total Center Size – 56,880 sq. ft.
- Traffic Count – 13,662 vehicles per day

## Demographics:

	10 miles	30 miles
Estimated Population in 2016	12,597	75,079
Projected Population in 2020	12,860	75,555
Average Household Income	\$45,116	\$48,041
Median Household Income	\$31,729	\$35,429



## For More Information

### Contact:

Raul Walters Properties

Phone Number:  
314.584.1606 ext.2

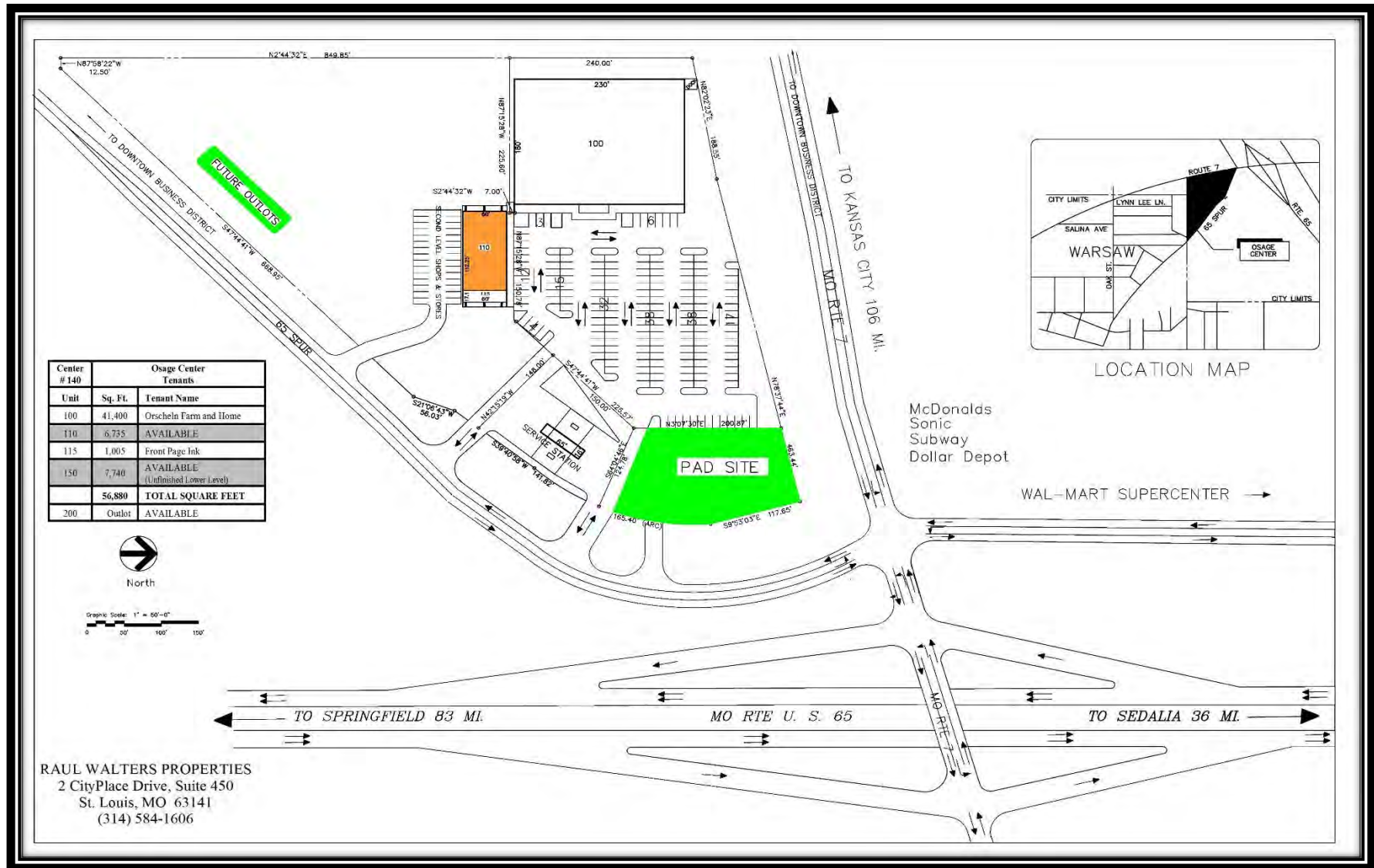
Office Address:  
Two CityPlace Drive  
Suite 450  
St. Louis, MO 63141

# OSAGE CENTER

1509 – 1575 Commercial St., Warsaw, MO 65355



Raul Walters  
PROPERTIES



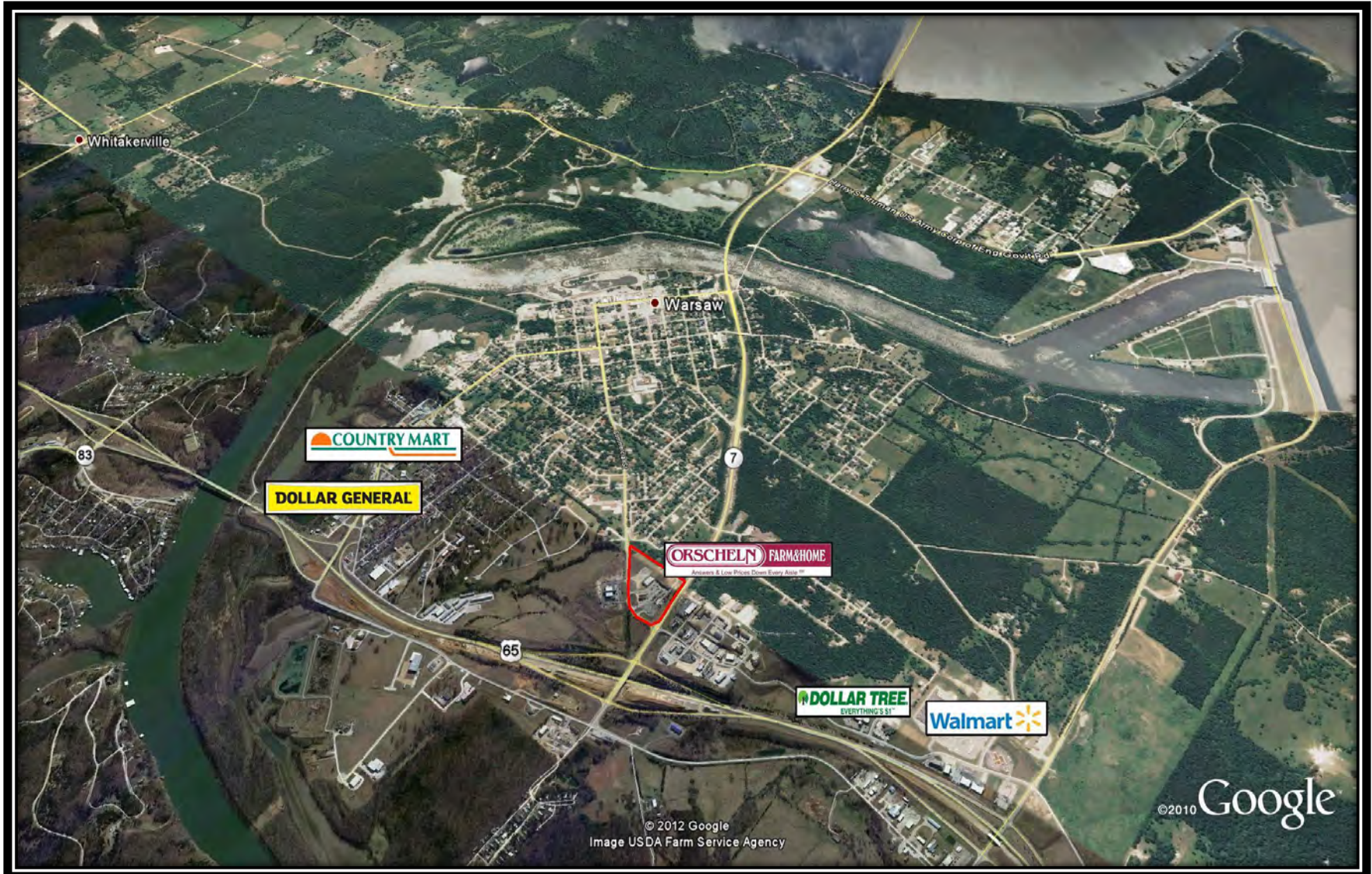
Disclaimer: The above information is based on current marketing conditions. No warranty or representation, expressed or implied, is made as to the accuracy of the information contained herein. Prospective customers should conduct their own due diligence. Raul Walters Properties shall not be responsible for any inaccurate information.

# OSAGE CENTER

1509 – 1575 Commercial St., Warsaw, MO 65355



Raul Walters  
PROPERTIES



Disclaimer: The above information is based on current marketing conditions. No warranty or representation, expressed or implied, is made as to the accuracy of the information contained herein. Prospective customers should conduct their own due diligence. Raul Walters Properties shall not be responsible for any inaccurate information.