

NORTH COUNTY

2712 – 2900 Paris Road, Columbia, MO 65202



Raul Walters
PROPERTIES



Property Information:

- High Volume Grocery Anchored Center
- Retail Space Available
- Outparcel Available
- Total Center Size – 98,987 sq. ft.
- Traffic Count – 21,372 vehicles per day

Demographics:

	3 miles	10 miles	30 miles
Estimated Population in 2016	52,048	151,362	319,397
Projected Population in 2020	55,362	162,201	333,826
Average Household Income	\$47,751	\$61,126	\$60,316
Median Household Income	\$36,095	\$43,693	\$45,855



For More Information

Contact:

Raul Walters Properties

Phone Number:

314.584.1606 ext.2

Office Address:

Two CityPlace Drive
Suite 450

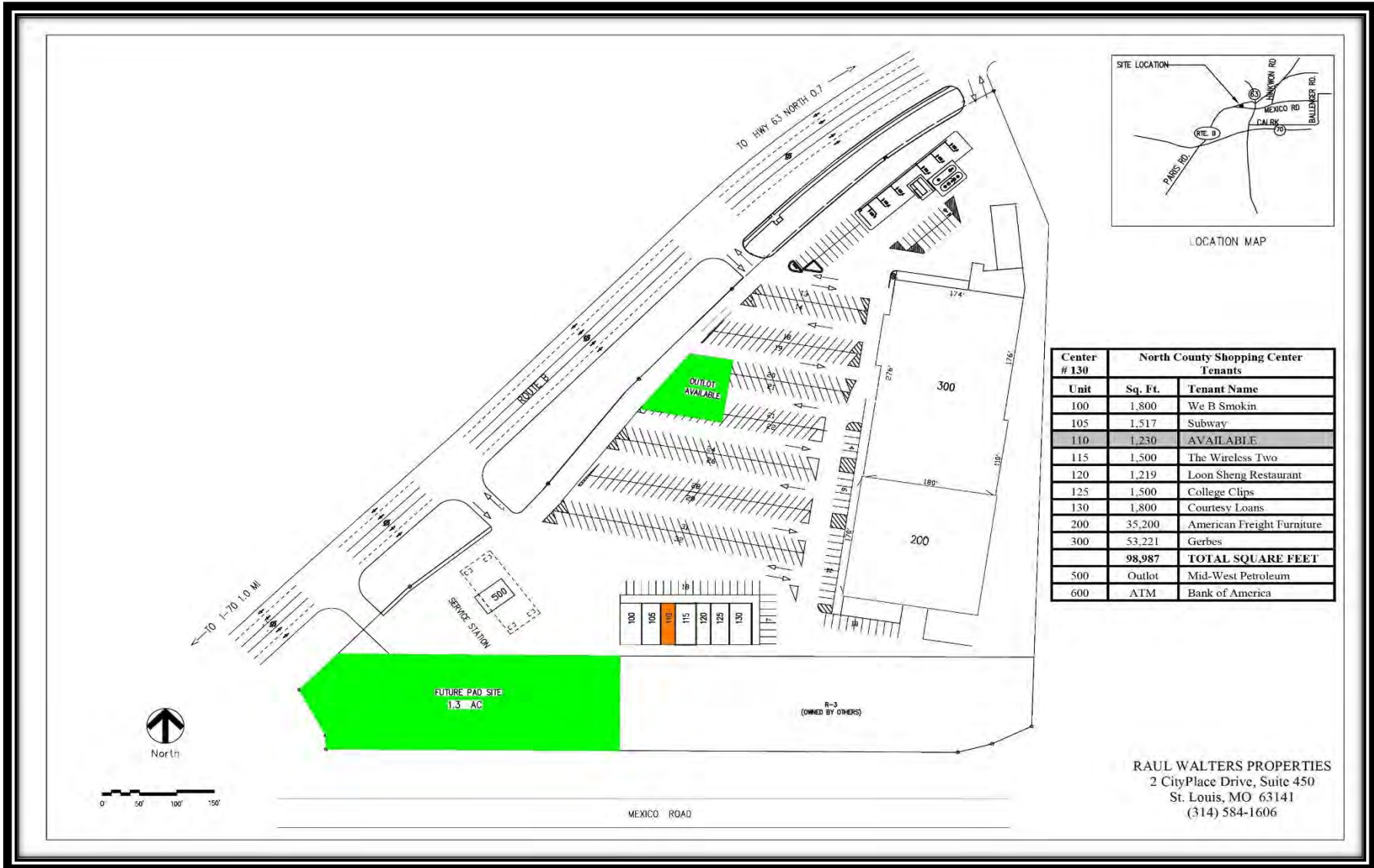
St. Louis, MO 63141

NORTH COUNTY

2712 – 2900 Paris Road, Columbia, MO 65202



Raul Walters
PROPERTIES

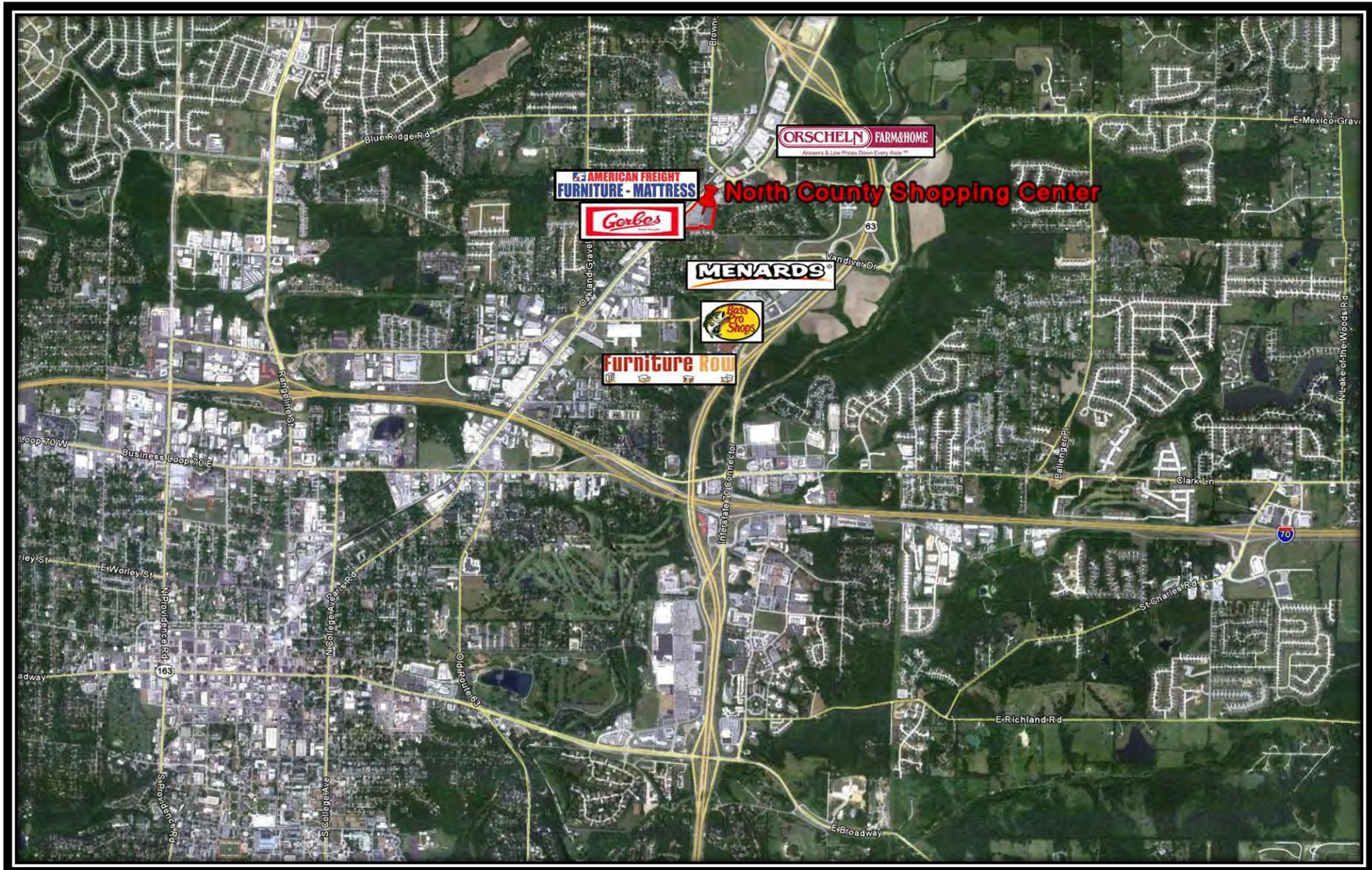


NORTH COUNTY

2712 – 2900 Paris Road, Columbia, MO 65202



Raul Walters
PROPERTIES



Disclaimer: The above information is based on current marketing conditions. No warranty or representation, expressed or implied, is made as to the accuracy of the information contained herein. Prospective customers should conduct their own due diligence. Raul Walters Properties shall not be responsible for any inaccurate information.